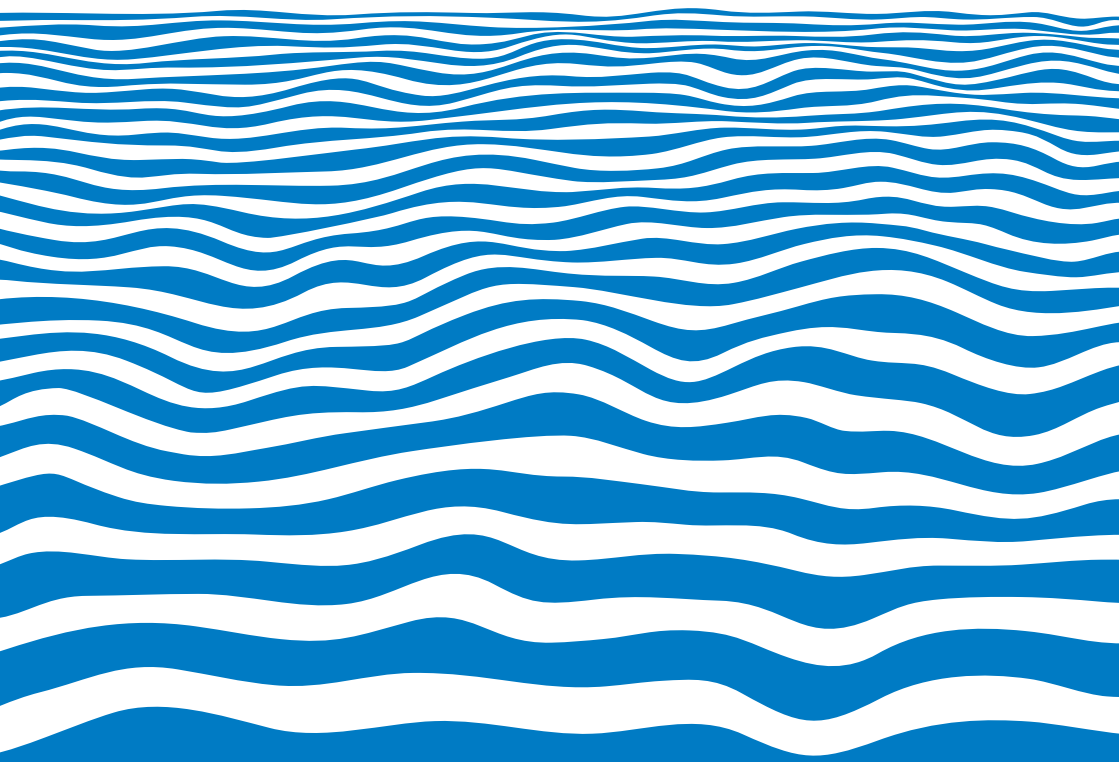


# YANKEE

Safety Cover

# USER MANUAL



# THANK YOU FOR TRUSTING YANKEE POOL PRODUCTS!

We love swimming pools, and we're committed to bringing cool swimming pool maintenance solutions to everyone who loves swimming pools as much as we do.



To view the most recent version of this manual online, scan the QR code or follow the link:

[www.yankeepoolcovers.com/manuals](http://www.yankeepoolcovers.com/manuals)

If you need assistance or advice, please email us at:  
[info@yankeepoolcovers.com](mailto:info@yankeepoolcovers.com)

Date of manufacturing: \_\_\_\_\_

## IMPORTANT:

- Please read this manual before using the safety cover, and keep the manual for reference.
- If you have any questions about this product or face any issues when using it, feel free to contact us directly for answers and assistance.
- Don't use the safety cover in any ways that are not described in this manual.
- Please inspect the cover for premature wear or deterioration before use.



# WARNING

## AVOID DROWNING RISK

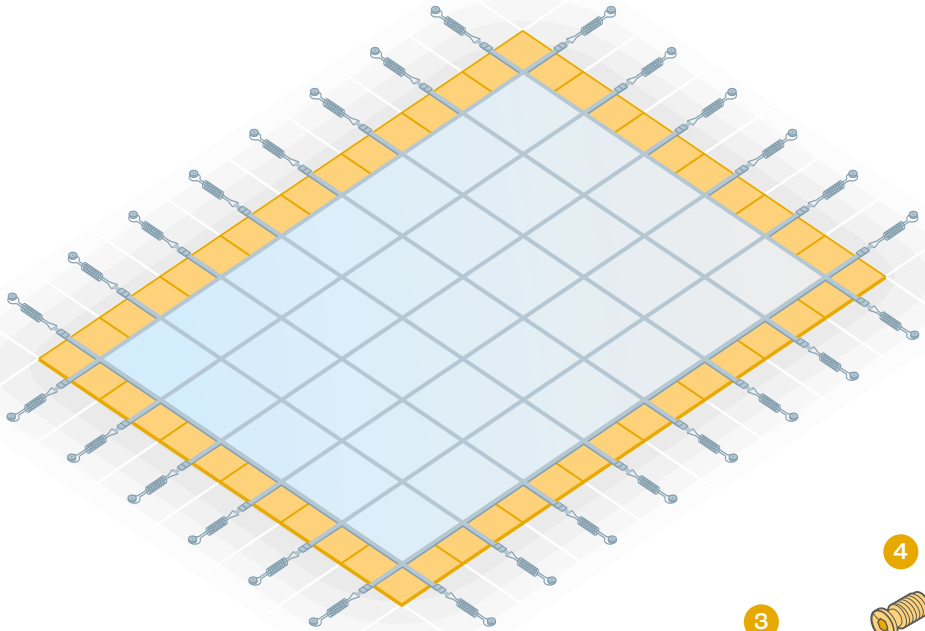
- Stay off cover.
- Keep children away. Children or objects cannot be seen under cover.
- Remove cover(s) completely before entry of bathers – entrapment possible.
- Remove Standing Water – a child can drown on top of the cover.
- Non-secured or improperly secured covers are a hazard.
- Safety cover is not to be a substitute for adult supervision.
- Failure to follow all instructions may result in injury or drowning.

**YANKEE**

Distributed by:  
Amazonas USA LLC  
16850 Collins Ave. #112-306  
North Miami Beach, FL 33160, USA  
[info@yankeepoolcovers.com](mailto:info@yankeepoolcovers.com)

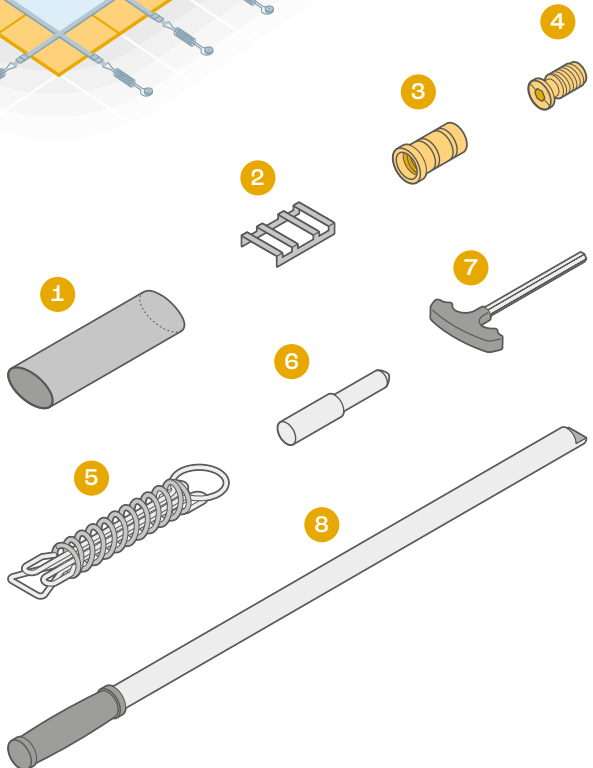
# WHAT'S IN THE BOX

## Safety cover



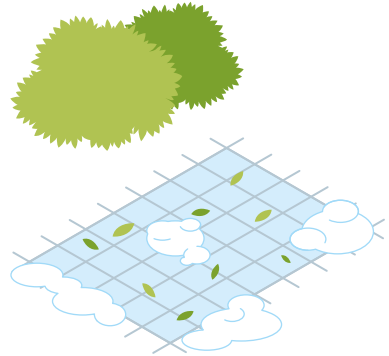
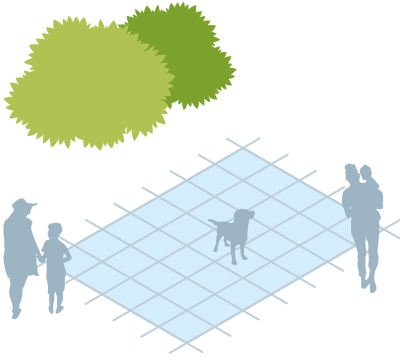
### Hardware:

- 1 Spring covers
- 2 Buckles
- 3 Concrete deck anchors
- 4 Wood deck anchors
- 5 Springs
- 6 Tamping tool
- 7 Allen wrench
- 8 Rod



# INTRODUCTION

The safety cover will help you winterize your swimming pool in a smarter way. It restricts access to your pool for when it's not in use, protects the pool from dirt and debris, and helps you make sure your swimming pool makes it intact through the colder, tougher months. Here's more on the substantial benefits:

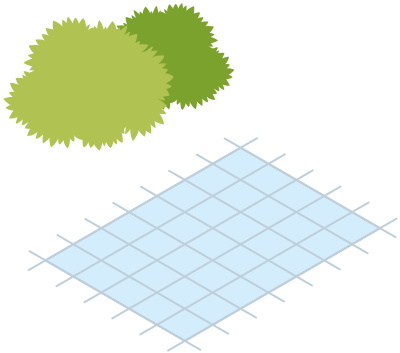


## Enhances safety

Installing a pool cover that is secured into the deck is the ultimate safety hack to protect your family members and pets during the off-season.

## Keeps the pool clean

Properly installed and fixed, a safety cover stops snow, ice, leaves, and dirt from going into the pool and keeps it clean until spring.



## Looks neat

Tidy appearance is important for the months when you can't use the pool, but it's still there and you still want it to look nice.

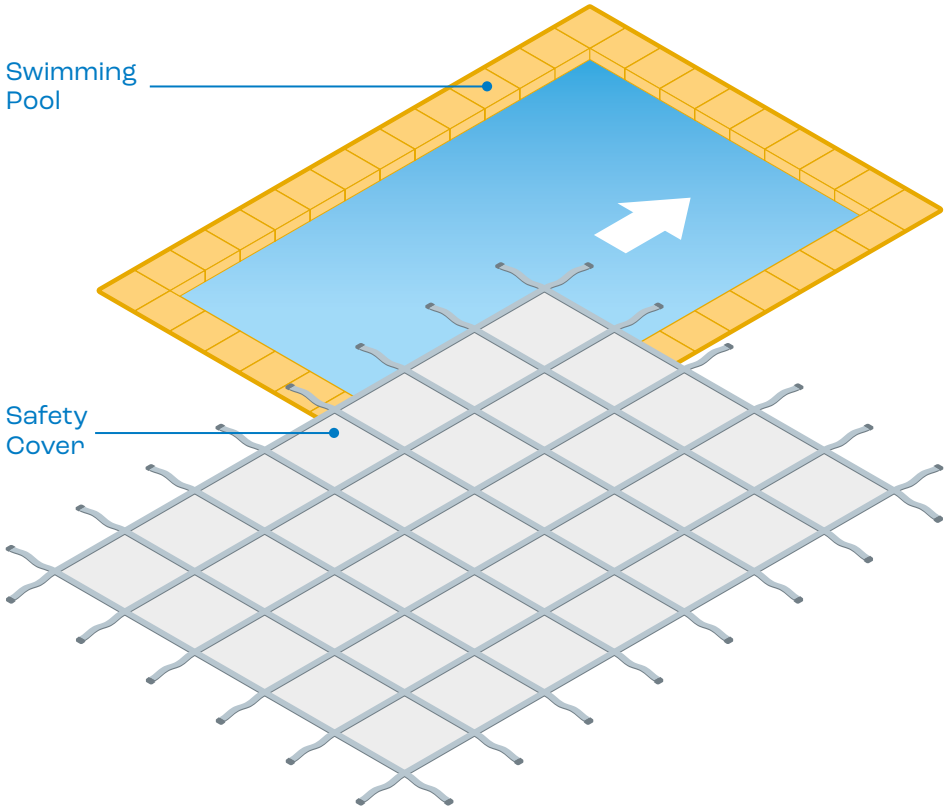
## Helps winterize the pool

Pool winterization is a multistep process where the cover is essential as it protects your pool from bad weather and debris.

# HOW TO USE

**NOTE:**

The water level inside the pool should not be more than 18" below the safety cover.

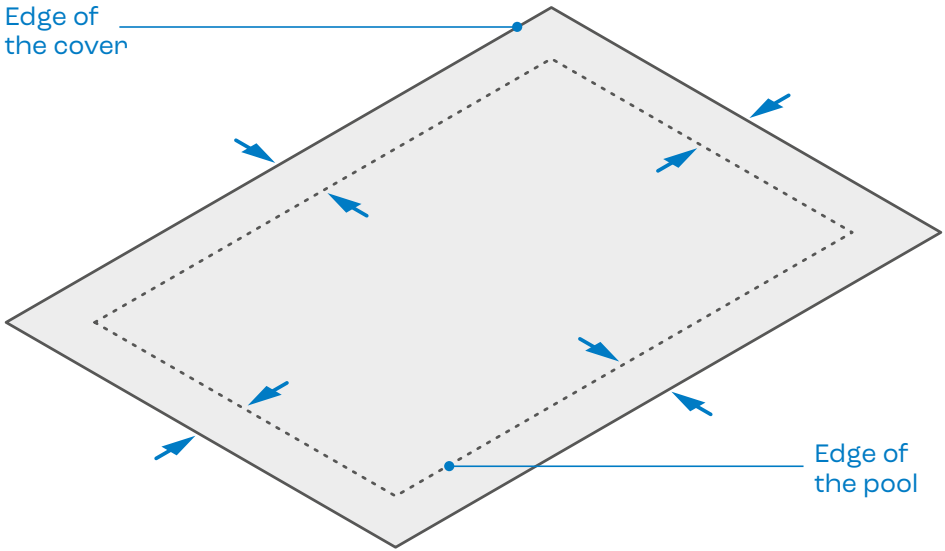


**1**

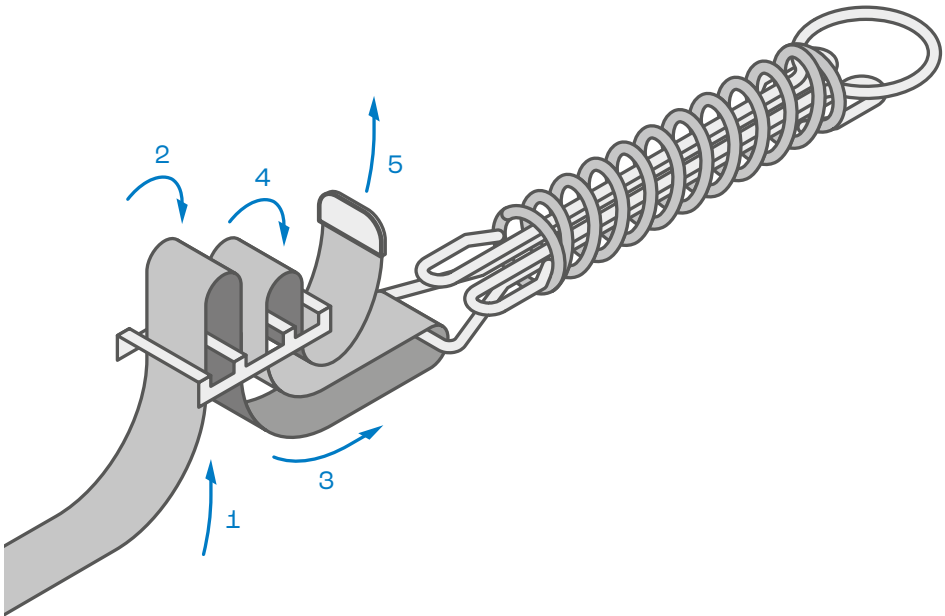
Unfold the cover carefully and spread it out on the water in the pool. Make sure there's enough water in the pool to support the cover during installation.

**IMPORTANT:**

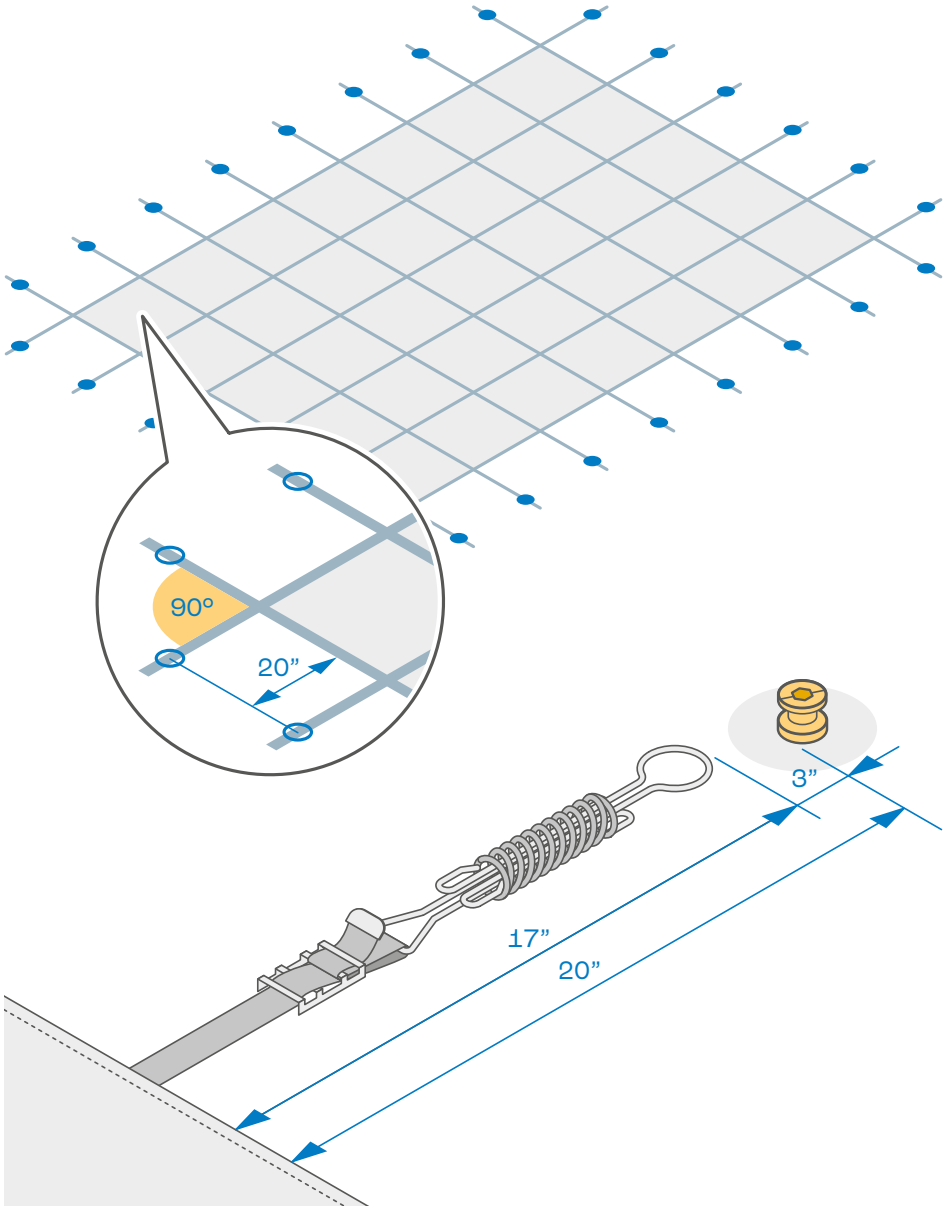
Make sure there are no objects on or around the deck that prevent the cover from lying flat.



**2** Adjust the cover so that its overlapping edges extend at equal distances from the edges of the pool from all sides.

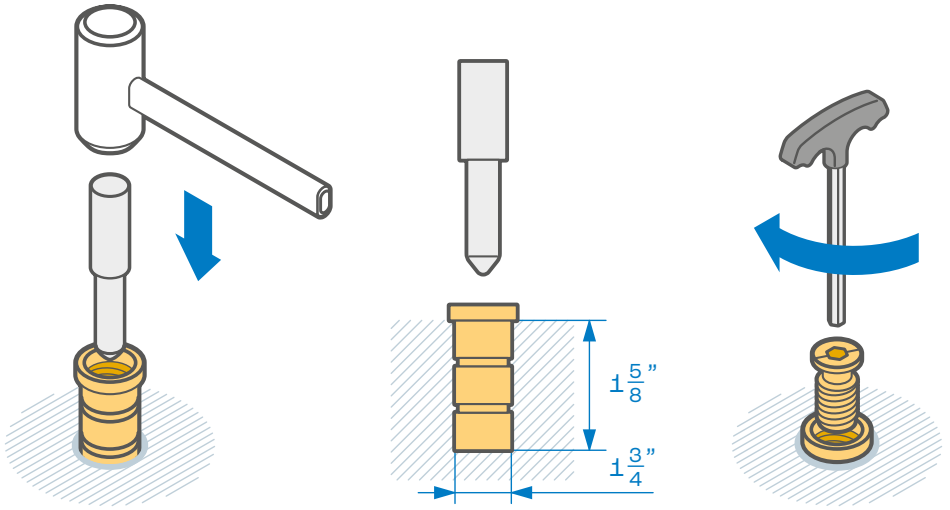


**3** Attach the straps of the cover to the springs using the buckles.

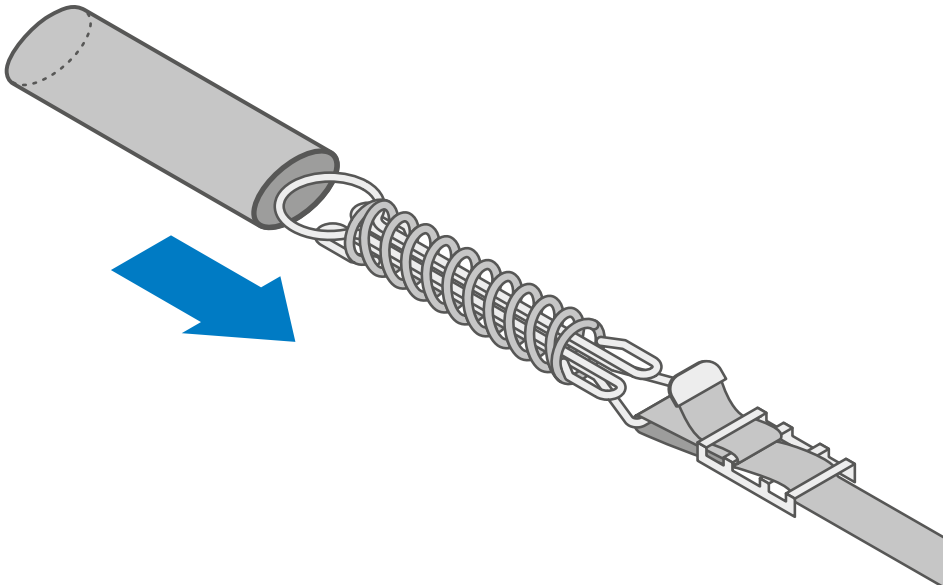


**4** Using chalk, mark spots on the deck where holes need to be drilled for the anchors. Start with the central straps (first lengthwise, then widthwise): the distance between the holes and the edge of the cover should be approximately 20". Once you mark spots for central holes on all four sides, move outwards towards the corners of the cover. Drawing chalk lines between the spots will help make sure that all the holes will be drilled at equal distances from the edges of the cover.

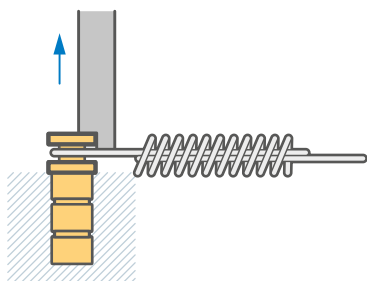
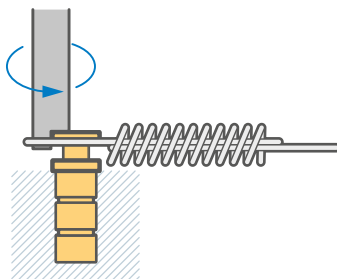
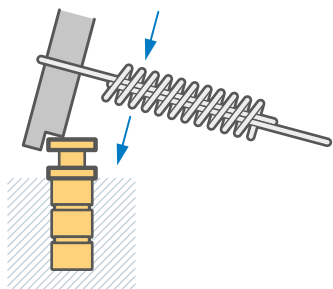




- 5** Drill the holes and install the anchors.



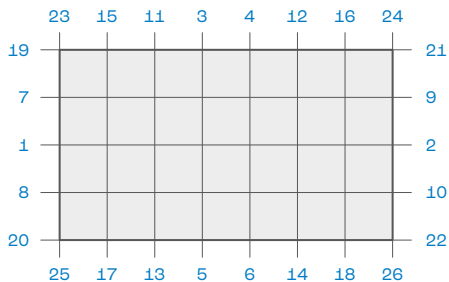
- 6** Optionally, put the spring covers on the springs.

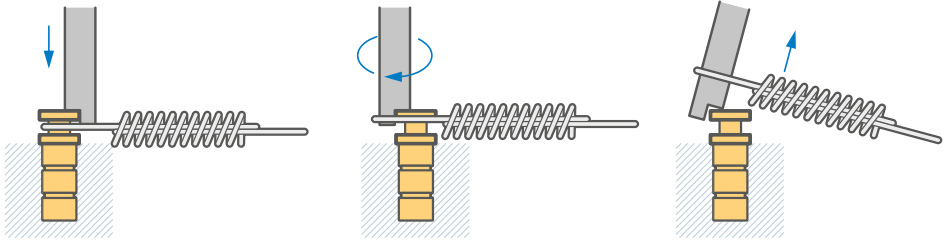


**7** When the anchors are installed, use the rod to pull the springs and make them slide over the anchors.

**NOTE:** You should start with the four central straps.

**8** Once the central straps are attached to the anchors, you can move outwards towards the corners of the cover. The general plan of which straps you need to attach first and how you should go through the rest of them is shown.





**9** When you want to remove the cover, reverse steps 7 and 8, carefully detaching the springs using the rod: first near the corners, then towards the centers.

## TIPS

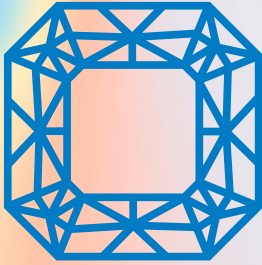
- Concrete decks should be 3" deep at least to accommodate the anchors properly.
- For wood decks, first drill shallow holes ( $\frac{1}{8}$ " of 1.5" in diameter). Then drill deeper holes (at least 2") of  $\frac{3}{4}$ " in diameter in the centers of the shallow holes, and place the anchors there.

## MAINTENANCE

- Keep the chemical balance of the water in your swimming pool healthy according to standard pool maintenance recommendations (proper pH, lime hardness, total alkalinity, and free chlorine levels).
- The cover is not to be walked on, except in emergencies.
- The cover is not to be dragged on the ground.
- Make sure the cover doesn't touch any sharp or rough objects or surfaces in or around the pool. If needed, add protective padding to any sharp or rough objects or surfaces to reduce the risk of damage to the safety cover.
- When installed, the cover should not be exposed to heat sources, open fire, and flammable substances.
- Clean the cover with non-aggressive cleaners and fresh water using a brush if necessary. Let the cover dry before folding it up.

## STORAGE

- Clean and dry the pool cover before folding it up for storage.
- Store in a dry, cool place.
- Do not expose the pool cover to sharp objects that can cause tears or other damage to it.
- Keep away from heat sources and flammable substances.



**SAPPHIRE  
SERIES**



**YANKEE**

